



ENERGY - EFFICIENT INSULATED STAIRCASE COVERS



Insulated Hatchway Covers (Attic Staircase Covers) w/ optional coverlet for adding up-to R60 insulation

Heavy-duty construction, tear resistant, cost-effective, vapor guard, easy-to-install and thermal radiant barrier which helps separate environmental location/conditions (e.g. hot or cold; humid or dry). Offering an optional coverlet that boosts the reflectivity factor, and adds up to R-60 additional insulation. Also shipping soon, is our "Spot-On" thermal temperature and humidity sensor, which offers real-time environmental monitoring.

- Reflects up to 97% of radiant heat
- ~10 R-Value & ~20 R-Value w/coverlet
- Creates a thermal radiant & vapor guard
- Insulates & air seals (dust) attic staircase
- 100% Components made in America
- Heavy-duty & easy zipper access
- Tear resistant material
- Saves money & energy

PENDING
PATENT
PENDING

*"Let us show you how easy
it is to save Money!"*



-Optional Coverlet
(just add insulation)

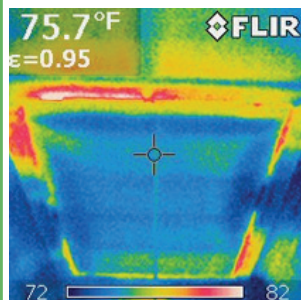


< More Info

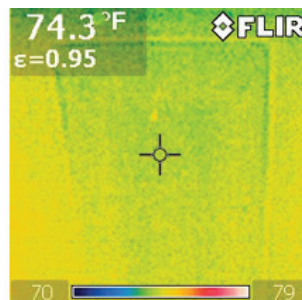


SAVING MONEY IS EASIER THAN YOU THINK!

Thermal-imaging below shows the difference
in energy lost when not properly sealed.



BEFORE



AFTER

The attic staircase access door is typically one of the largest sources of air leakage in your home. The US Dept of Energy states that a gap as small as 1/4 inch around your pull-down attic stairs can leak as much air as is supplied by a regular bedroom air duct ($\approx 100\text{CFM}$). Sealing and insulating this leak is essential to improving your home's energy efficiency.

The PowerJolt Attic Staircase Cover is an easy solution to sealing this problem area while maintaining easy access to your attic. When properly installed, it will seal and help insulate this vulnerable point in your home's defense against tremendous energy loss. It is very cost effective, simple to install and will dramatically reduce energy loss, therefore lowering your heating and cooling bills and saving cycle times on your HVAC.



Available Sizes:

22" x 56" x 10"
25" x 56" x 10"
30" x 58" x 15"

